

MODENA80_S_8W_LED_570	IP44	IK03		CE	
-----------------------	------	------	---	----	--

**Tope article** 6004000022

# **Data Sheet**

Surface/suspended edge lit LED luminaire with a slim 27mm profile. Electronic, fixed output gear. IP44 protection degree. IK03. Body: sheet aluminium white (RAL9016). Diffuser: UV-stabilised, PRO-LINE prismatic optic. Electrical connection via push wire terminal blocks. Complete with 4000K LED. With integrated driver.

Dimencions: 87x87x27 mm.

Total power: 6,8W

Luminaire luminous flux: 461 lm

Luminaire efficiency: 67,79 lm/W

Weight: 0,46 kg

Light source: LED

Color rendering index min.: >80

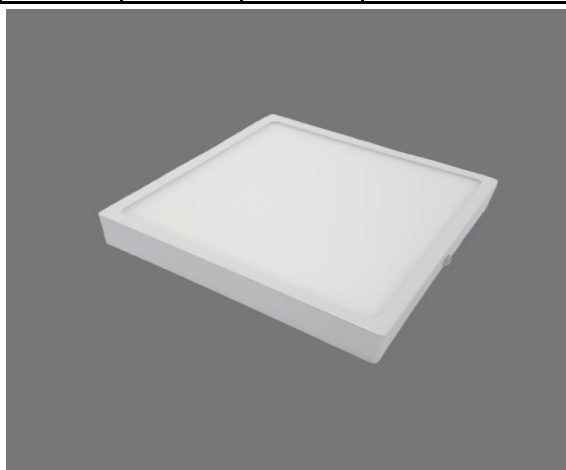
Correlated colour temperature: 4000 Kelvin

Rated median usefull life: 50000 L90 25°C

Ballast: 2xTUV

Luminaire input power: 8W

Dimming: Fixed output



All values are rated values. TopE Lighting uses tried and tested components from leading suppliers, however there may be isolated instances of technology-related failures of individual LEDs during the rated product lifetime. International standards set the tolerance in initial flux and connected load at  $\pm 10\%$ . Colour temperature is subject to a tolerance of up to  $\pm 150$  Kelvin from the nominal value. Unless stated otherwise, the values apply to an ambient temperature of 25°C. In most products the failure of one LED point causes no functional impairment to the lighting performance of the luminaire and is therefore no reason for complaint

