

VORMEST®

FOUNDATION FOOTING FORM

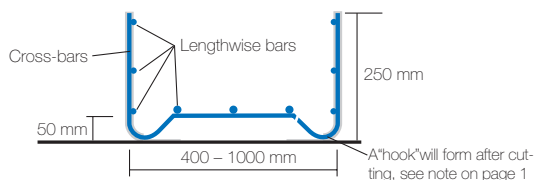
Fast and economical

The main advantages compared to wooden form

- Faster;
- More economical;
- The forms do not need to be dismantled;
- The construction site remains clean and safe.

Technical data:

- Length 5,0 m, (special order 6,0 m);
- Width: 400, 500, 600, 700, 800, 900, 1000 mm;
- Height 250 mm;
- Height of bottom reinforcement from the ground 50 mm;
- Lengthwise reinforcing bars 3 x Ø 8 mm; yield strength 500 N/mm²;
- Cross-bars Ø 6 mm, spacing 200 mm.



BASE FOR A GOOD HOUSE

www.vormest.com
info@vormest.com riga@vormest.com
 tel. +372 56 817 665 
 tel. +372 50 62 796 
 tel. +371 257 55 602 
 Silikaltsiidi 7, 11216 Tallinn, Estonia

The following tools are needed for installation:

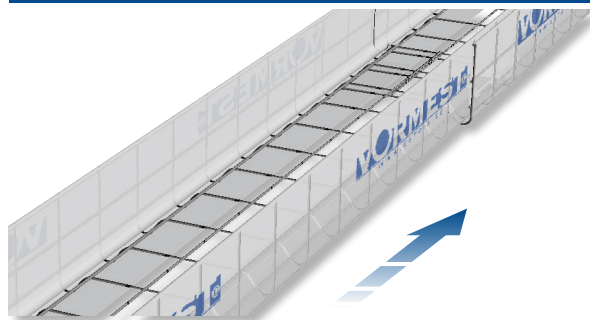
Pliers for cutting the reinforcement; knife for cutting plastic, reinforcement fastening hooks; binding wire for connecting the forms, as well as measuring tape and amarking pencil.

The installation will take a few of hours. For calculating the total length of the formwork, add 10 to 15% for connections and overlapping.

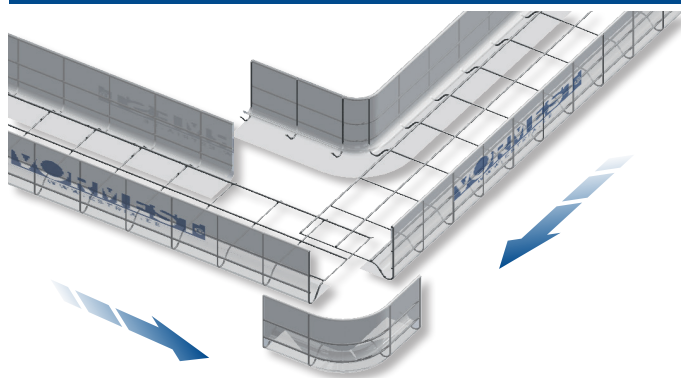
- Before starting the installation, measure and mark off the foundation axes.
- Start the installation from the furthest side.
- First install the full-length forms, then the missing pieces.
- Fasten the connections with binding wire.
- Place the loose end of the plastic under the edge of the form.
- Mark the level of concrete on the inner wall of the form.
- Cast the concrete following these levels.

The footing mold is designed for a 20-cm layer of concrete. In case of thicker layer, the upper width of the molds will expand up to 3 cm. This will create a need for 0.5 m³ more concrete per 100m of foundation. Tips for making common connections are shown in figures aside. Steps, inclines, curves, extensions (for chimney foundation etc).

Continuation connection



Corner connection



T-Connection

