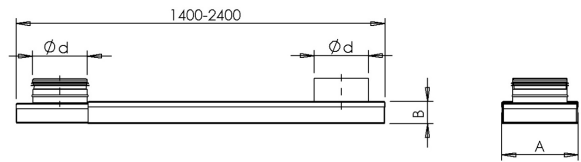


Sauna duct SGV



Description

Telescopic rectangular sauna duct SGV with circular connectors on both ends and gasket on one. Gasket provides a better sealing with ventilation ducts, while gasket-less end is meant for mounting air exhaust valve.

Technical data

Construction Made from galvanized steel
 Installation Multiple position

Dimensions

Type	A [mm]	B [mm]	$\varnothing d$ nom [mm]	Length [mm]
01-SGV100	140	40	100	1400-2400
01-SGV125	170	45	125	1400-2400