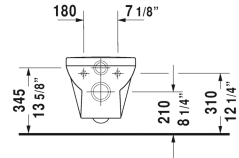
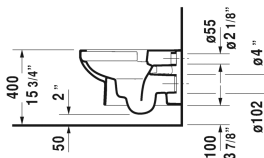
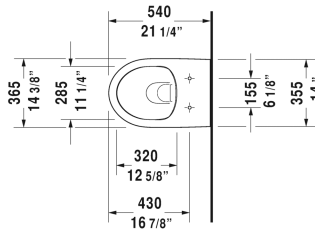


DuraStyle Basic Toilet wall-mounted Duravit Rimless® # 256209..92 / 256209..92

| < 14 3/8" Inch > |



Toilet wall-mounted Duravit Rimless®	Dimension	Weight	Order number
rimless, washdown model, cUPC® listed*			
Colors			
00 White 20 HygieneGlaze (an antibacterial ceramic glaze that provides almost indefinite effectiveness)			
Variant			
♣ 1.6/0.8 gpf	14 3/8" x 21 1/4" Inch	50.7 lb	256209..92
♣ 1.6/0.8 gpf	14 3/8" x 21 1/4" Inch	50.7 lb	256209..92
Infobox			
* Complies with following standards: ASME A112.19.2/CSA B45.1 and ASME A112.19.14, In-wall tank & carrier and actuator plate required for installation / Refer to page XXX, Wall-mounted toilet is ADA compliant, when installed with a seat height of 17" - 19" from the finished floor, Optionally available with a standard seat and cover			
Sanitary ceramics with the special WonderGliss surface finish will remain clean and attractive-looking for a long time to come. When ordering WonderGliss please add a "1" as eleventh digit to the model number.			
Sigma 01 flush plate, dual flush for toilets, White	9 5/8" x 6 1/2" Inch		115770
Geberit carrier for toilets	19 3/4" x 3 1/8" Inch	37.5 lb	111798
Geberit in-wall tank and carrier for toilets, width 19 3/4", depth 5 1/2", height (adjustable) 43" - 47"	19 3/4" x 5 1/2" Inch	40.8 lb	111335
Noise reduction gasket for wall-mounted toilet		0.7 lb	005064
Suitable products			
Toilet seat and cover hinges stainless steel, with slow close,			002079
Toilet seat and cover hinges stainless steel, without slow close,			002071

All drawings contain the necessary measurements which are subject to standard tolerances. They are stated in inch & mm and are non-binding. Exact measurements, in particular for customized installation scenarios, can only be taken from the finished ceramic piece.